

Morris County's Environmental Guide

This guide is brought to you by the Morris County Municipal Utilities Authority (MCMUA), an authority of the Morris County Board of Chosen Freeholders.

Known today as "Morris County's Environmental Resource," the Morris County Municipal Utilities Authority has been serving Morris County, NJ for over half a century. Through the dedication of board members and employees, past and present, the MCMUA has been meeting the water and solid waste needs for Morris County in a way that is cost-effective, efficient and good for the environment.

This guide includes information from the MCMUA on how to recycle and dispose of waste materials commonly generated by Morris County residents and businesses. It also provides tips and solutions on how to minimize the impact on the environment when discarding such wastes.

Copies of the MCMUA's flyers and educational materials are available on the MCMUA's website:

www.MCMUA.com

Inside

- Recycling by Towns
- Composting
- Household Hazardous Waste
- Clean Communities
- Garbage
- And More...



MORRIS COUNTY



MUNICIPAL UTILITIES AUTHORITY

Morris County Municipal Recycling Contact List Information

Boonton Town, 973-402-9460
www.boonton.org
Municipal Recycling Depot

Boonton Township, 973-402-4024
www.boontontownship.com
Municipal Recycling Depot

Butler, 973- 838-7200
www.butlerborough.com

Chatham Borough, 973-635-5242
www.chathamborough.org
Municipal Recycling Depot

Chatham Township, 973-377-5114
www.chathamtownship-nj.gov
Municipal Recycling Depot

Chester Borough, 908-879-3660
www.chesterborough.org

Chester Township, 908-879-5100
www.chestertownship.org

Denville, 973-625-8334
www.denvillenj.org
Municipal Recycling Depot

Dover, 973-366-2200
www.dover.nj.us
Municipal Recycling Depot

East Hanover, 973-888-6080
www.easthanovertownship.com
Municipal Recycling Depot

Florham Park, 973-410-5330
www.fpboro.net
Municipal Recycling Depot

Hanover, 973-428-2495
www.hanovertownship.com
Municipal Recycling Depot

Harding, 973-267-2448
www.hardingnj.org
Municipal Recycling Depot

Jefferson, 973-208-3639
www.jeffersontownship.net
Municipal Recycling Depot

Kinnelon, 973-838-5401
www.kinnelonboro.org
Municipal Recycling Depot

Lincoln Park, 973-270-2056
www.lincolnpark.org
Municipal Recycling Depot

Long Hill, 908-647-0070
www.longhillnj.gov
Municipal Recycling Depot

Madison, 973-593-3088
www.rosenet.org
Municipal Recycling Depot

Mendham Borough, 973-543-6535
www.mendhamnj.org
Municipal Recycling Depot

Mendham Township, 973-543-6535
www.mendhamtownship.org

Mine Hill, 973-366-9031
www.minehill.com

Montville, 973-331-3341
www.montvillenj.org

Morris Plains, 973-538-2224
www.morrisplainsboro.org
Municipal Recycling Depot

Morris Township, 973-326-7398
www.morristwp.com
Municipal Recycling Depot

Morristown, 973-292-6670
www.townofmorristown.org
Municipal Recycling Depot

Mount Arlington, 973-398-4200
www.mountarlingtonnj.org
Municipal Recycling Depot

Mt. Olive, 973-691-0900
www.mountolivetownship.com
Municipal Recycling Depot

Mountain Lakes, 973-334-1577
www.mtnlakes.org
Municipal Recycling Depot

Netcong, 973-347-6664
www.netcong.org
Municipal Recycling Depot

Parsippany-Troy Hills, 973-263-7274
www.parsippany.net
Municipal Recycling Depot

Pequannock, 973-835-5700
www.peqtwp.org

Randolph, 973-989-7050
www.randolphnj.org
Municipal Recycling Depot

Riverdale, 973-835-6077
www.riverdalenj.gov

Rockaway Borough, 973-627-2000
www.rockawayborough.com
Municipal Recycling Depot

Rockaway Township, 973-627-1700
www.rockawaytownship.org
Municipal Recycling Depot

Roxbury, 973-448-2053
www.roxburynj.us
Municipal Recycling Depot

Victory Gardens, 973-366-5312
www.victorygardensnj.gov

Washington, 908-876-3382
www.wtmorris.org
Municipal Recycling Depot

Wharton, 973-366-2155
www.whartonnj.com
Municipal Recycling Depot



Save The Food
 With so much hunger around us, it is a shame to waste food. Find out more at: savethefood.com

Can a Pizza Box be Recycled? Here is the "not so simple" answer.

Cardboard pizza boxes are technically recyclable. However, pizza contains grease and greasy residue contaminates paper destined for recycling mills. Paper fibers can't be separated from the oils, ruining the whole batch of recycling. This costs the paper industry up to \$700 million per year.

IF YOU'RE A PIZZA LOVER WHO LOVES TO RECYCLE, WHAT CAN YOU DO?

Recycle just the parts of the box with **NO grease or food** stuck to them. If the lid is grease free, tear it off and recycle, while trashing the greasy bottom.



DON'T FORGET TO RECYCLE ALL OF THOSE CARDBOARD BOXES THAT ARE DELIVERED TO YOUR HOME. VISIT YOUR MUNICIPAL RECYCLING WEBSITE FOR MORE INFORMATION ABOUT RECYCLING IN YOUR TOWN.

RECYCLE.NJ.GOV



The MCMUA loans ClearStream recycling containers, as seen in this photo, to non-profits and towns for use at special events. They work great to get the public to source separate and recycle at public events.

The MCMUA provides recycling and trash container decals free of charge to Morris County residents, institutions and businesses. Visit www.MCMUA.com to view the free decals. To request decals, call 973-285-8395 or email info@mcmua.com.



Composting

For your fruit and vegetable trimmings/rinds, coffee grinds, etc., consider starting a compost pile in your backyard or at your community garden. The largest remaining portion of garbage that goes to a landfill is food waste. A portion of that food waste is compostable. Instead of the compostable portion of your food waste being a costly environmental burden of being picked up at your house and transported all the way to a landfill, compost it in your backyard and reap the benefits of a free, nutrient-rich soil additive.

According to the Rutgers New Jersey Agricultural Experiment Station (NJAES), composting is a natural process where organic materials decompose and are recycled into a dark, crumbly, earthy smelling soil conditioner known as “compost”. Compost improves soil structure and moisture retention, and contributes to healthy plant growth by providing plant nutrients.

To get started, here are helpful links:

<https://njaes.rutgers.edu/pubs/fs811/>

<http://www.mastercomposter.com>

<https://www.epa.gov/recycle/composting-home>



The Rutgers NJAES lists some reasons for why you should compost

Composting is easy and can save money

- Reduces fertilizer, chemical inputs and water use
- Can save garbage collection and landfill fees
- Reduces the volume of garbage going to landfills, transfer stations and incinerators
- Improves soil structure and texture
- Increases aeration and water holding
- Promotes soil fertility and stimulates healthy root development
- Aids in erosion control
- Saves time bagging grass and leaves
- Quick and fun way to help the environment.



SAVES CLEANUP TIME
SAVES MONEY ON FERTILIZER USE
REDUCES WASTE
CREATES A HEALTHIER AND GREENER LAWN



recycle.nj.gov



Screened Compost and Double Ground Mulch for Sale

The MCMUA offers home delivery of truckload quantities of screened compost and double-ground wood mulch. Delivery is from mid-April through the end of September to Morris County residents only. To order, call 973-285-8389 or 973-285-8383.

Note: April through June are our busiest months; July and August are generally less busy. Visit www.MCMUA.com to learn more about composting.



Compost adds vital organic matter to soil that enhances fertility, increases water retention, and enhances nutrient availability.



Compost bins for home use come in many shapes and sizes. Make your own out of wooden pallets or purchase one at a garden center or hardware store.



Garbage Collection In Morris County

Each town in Morris County is responsible for its own system to collect garbage and the level of service provided by each town varies. While the MCMUA does not provide garbage collection service, it does own the two Morris County transfer stations where all Morris County garbage is required to be delivered prior to transport to out-of-county landfills. This is in accordance with the waste flow requirements of the Morris County Solid Waste Management Plan. The two transfer stations are located in Parsippany and Mt. Olive.

There are three primary systems of residential garbage collection in Morris County:

1. Some towns use their own municipal employees and equipment to collect garbage;
2. Some towns contract with private garbage haulers to collect the garbage;
3. Some towns do not manage or provide garbage collection services at all. In those towns, each resident subscribes and pays individually for garbage collection service with a private hauler that offers collection in the town.

Regarding apartments and condominiums, some towns provide for the collection of garbage at the multi-family complexes while others do not. Check with the manager of the complex to determine how garbage is collected.



1. Mt. Olive Transfer Station
2. Parsippany Transfer Station



Q&A

Q. Can residents use the transfer stations to dispose of their own garbage?

A. Residents are allowed to use the MCMUA's transfer stations for disposing of their own household garbage provided they comply with all rules and requirements related to safety, vehicles and payment options. Go to the MCMUA's website to read about these requirements, or call 973-829-8585 to ask any questions. Residents do not need to make appointments to use the transfer stations, as they are available to residents during normal operating hours.

Q. What are the requirements for types of vehicles that a resident can use to dispose of their own garbage?

A. All vehicles delivering waste to the transfer stations need to have decals from the NJ Department of Environmental Protection (NJDEP), except if the vehicle is from a homeowner delivering waste from their home. The only exception to having an NJDEP decal on your truck is if you are delivering your own waste self-generated in your home and the vehicle is registered with the Motor Vehicle Commission as having a gross vehicle weight of 9,000 lbs. or less, and the vehicle does not have commercial plates.

Important: Do not rent a truck from U-Haul, Lowes, Home Depot, Ryder, etc. to deliver waste to the transfer stations, since these rental trucks have commercial plates. State law requires all vehicles with commercial license plates to have current NJDEP hauling decals on them in order to use the transfer stations. These rental trucks do not have NJDEP decals.







In addition, unless the waste you are hauling is self-generated from your own home, you are required to obtain an NJDEP hauling decal to use the transfer stations. This is regardless of the weight of the vehicle. For more information about NJDEP decal requirements, call the NJDEP directly at 609-292-7081.

Battery Disposal & Recycling as Easy as "1-2-3"

In 2010, revised U.S. Department of Transportation (DOT) regulations about the management of batteries throughout the United States went into effect. Because dry-cell batteries can short circuit and catch fire while being transported, the DOT now requires enclosing each hazardous dry-cell battery in a plastic bag to cover its terminals prior to transport.

Figuring out how to manage batteries in Morris County under these regulations is as easy as "1-2-3".

1. Throw alkaline (non-hazardous and use-once) dry-cell batteries into the trash.
2. Recycle rechargeable batteries by using Call2Recycle® drop-off boxes. Find registered locations by contacting 877-2-Recycle or www.call2recycle.org.
3. Take all other types of batteries to a household hazardous waste disposal program where they will be properly bagged and managed as hazardous waste. The three types of dry-cell batteries are listed in the image located to the right.

<h2 style="font-size: 2em;">1</h2> <p>Alkaline Batteries (non-hazardous and use-once) Throw in the Garbage</p>  <p style="text-align: center;">↓</p> 	<h2 style="font-size: 2em;">2</h2> <p>Rechargeable Batteries (hazardous and multi-use) Recycle with Call2Recycle®</p>  <p style="text-align: center;">↓</p> 	<h2 style="font-size: 2em;">3</h2> <p>Other Batteries (hazardous and use-once) Take to Household Hazardous Waste Program</p>  <p style="text-align: center;">↓</p> 
---	---	---



Electronics (E-Waste) Recycling

Television, computers, laptops, monitors, desktop fax machines, and desktop printers cannot be disposed of in the garbage by law.

Visit the MCMUA's website for a listing of facilities that recycle E-waste, or contact your municipal recycling coordinator.

Thinking About Moving?

Don't wait until your closing day to get organized! Your movers will not ship your household hazardous waste. Now is the time to get your garage and basement ready. Call 973-829-8006 to plan on your household hazardous waste disposal ahead of time. You will thank yourself on moving day.



Paint Disposal

Latex (also called "water-based") paint is **not** a hazardous waste and should be disposed of at curbside with the rest of your household garbage.

Here's how to properly dispose of latex paint:

- Make sure the paint can is ½ full or less. (If the can is more than ½ full, pour excess into another container, like a milk jug, coffee can, or trash bag.)
- Add clay-based kitty litter or Speedy

Dry so that the can is ¾ full.

- Stir paint and kitty litter or Speedy Dry mixture.
- If liquid paint remains, add more kitty litter or Speedy Dry.
- Allow paint and kitty litter or Speedy Dry mixture to dry until it is no longer pourable.
- Dispose of can in the garbage.

DO NOT PUT THE LID BACK ON THE PAINT CAN!

Cans will not be picked up by your trash hauler

if he/she can not see that the paint is dry.

Oil-Based Paint is a flammable material and considered hazardous. It must be delivered to and disposed of at a household hazardous waste disposal program.

Please call 973-829-8006 for more information on hazardous waste disposal drop-off schedules. Additional information is provided in this guide.

Household Hazardous Waste

The Morris County household hazardous waste (HHW) disposal program is designed to provide Morris County residents with an environmentally sound way of recycling or disposing of hazardous materials found in and around the home.

A hazardous material is a solid waste that exhibits at least one of the four following characteristics: ignitability, corrosivity, reactivity, or toxicity.

The MCMUA provides two options for HHW disposal, one-day events and a permanent facility open year-round, accessible by appointment. Of note, Morris County is one of only three counties in New Jersey to offer a permanent facility disposal option.



One-Day HHW Events

The MCMUA offers several one-day HHW disposal events each year at locations around Morris County. These events are open to Morris County residents only and no appointment is needed. The dates, times and locations are posted on the MCMUA's website or call 973-829-8006. Note: E-waste is no longer accepted at one-day events.

Permanent HHW Facility

In order to make managing HHW more convenient for Morris County residents, the MCMUA also maintains a permanent HHW facility that allows both residents and eligible businesses to dispose of hazardous materials throughout the year, by appointment. While businesses are charged a disposal fee, most materials are accepted from Morris County residents at no cost. To schedule an appointment call 973-829-8006.

Problems caused by Improper HHW Disposal:

In the Home: Risks to children, pets, and homeowners if used or stored improperly.

Chemical Incompatibility: Combined materials may react causing fumes, fires, or explosions. For instance, chlorine bleach mixed with ammonia forms a deadly gas.

Poured Down the Drain: May ruin septic fields, pollute groundwater, pass through municipal systems to surface waters.

In refuse: May injure curbside workers, damage containers or vehicles.

HHW accepted in the program:

- E-waste: [Accepted at the permanent facility only.] TVs, computers, laptops, monitors, desktop printers, desktop fax machines. All other electronics may be disposed of in the trash.
- Pesticides, herbicides, fertilizers
- Oil-based paints and stains
- Paint thinners, removers, solvents
- Automotive fluids
 - ♦ Antifreeze
 - ♦ Motor Oil
 - ♦ Transmission, steering and brake fluids
- Gasoline, kerosene, diesel fuel
- Batteries
 - ♦ Automotive, motorcycle, boat
 - ♦ Button cell, lithium, rechargeable
- Pool chemicals
- Darkroom chemicals
- Aerosol cans (not empty)
- Propane and helium cylinders (BBQ-sized or smaller)
- Small quantities of asbestos (up to 100 lbs., wetted, double bagged and sealed with duct tape; no siding)
- Driveway sealant, roofing tar
- Fluorescent, HID lamps, PCB-Ballasts
- Mercury-containing devices (e.g. thermometers, thermostats, mercury switches, manometers)
- Hazardous cleaning products
- Muriatic acid
- Fire extinguishers

Unacceptable materials:

- Drums of any material: Large quantities of waste must be transferred to 5-gallon pails or smaller prior to delivery.
- Latex products: These are non-hazardous, water-based paint products that should be dried and disposed of in the garbage.
- Grout, spackle, joint compound: Dispose of in the garbage.
- Empty Containers: Once a material has been used, put the empty container in the garbage.
- Highly reactive or unstable materials:* Items such as benzoyl peroxide, gunpowder, chlorine (wet or gaseous), dioxane, any of the ethers, ethyl nitrate, nitro compounds, phosphorous, picric acid, potassium perchlorate, pyridine, potassium and/or sodium metals, uranium/uranium compounds, old chemistry sets.
- Unknown Materials:* If unlabeled or unidentifiable, the waste may not be acceptable.
- Smoke Detectors: Return to the manufacturer.
- Medical waste: Call 973-829-8006 for more information.
- Tires: Call your town or the MCMUA at 973-829-8585.
- Alkaline & carbon zinc batteries: These are non-hazardous and should be disposed of in the garbage.
- Electronics which are not TV's, computers, laptops, monitors, printers or faxes.

*** Call 973-829-8006 before transporting these materials.**

Business Waste: The HHW program is primarily for "household" hazardous waste. Eligible business waste may be accepted at the HHW facility with prior approval. Businesses are required to schedule an appointment and pay a hazardous waste disposal fee for any material accepted.

Morris County Clean Communities Program



Morris County's Clean Communities program is part of a statewide strategy to prevent litter from accumulating on streets, beaches, waterways, and in parks. The program has three goals: education, enforcement, and the cleanup of litter. Funding is provided by the State of New Jersey from a user fee on 15 kinds of litter-related products. The funds must be used for litter abatement education, as well as for litter cleanup efforts. The Morris County Clean Communities program conducts litter cleanups on county roads in an effort to restore the natural beauty of our county.

The county wide program also sponsors educational programs for schools and libraries. The programs offer environmental topics that encourage the audience to protect our planet Earth. The main focus of these programs is to change the attitudes of those who litter.

The Morris County Clean Communities program supports the efforts of preventing illegal dumping. Illegal dumping is the intentional dumping of solid waste and includes throwing debris out of a car, placing waste along roadsides or in someone else's dumpster. The Morris County Clean Communities program is a proud sponsor of the New Jersey Clean Communities Environmental Student Exchange program. Annually, students from various schools come together to share the environmental projects that they have worked on and to learn from students from other parts of the State. This team-building experience provides students with the opportunity to come up with policies and solutions to environmental issues that are present

throughout New Jersey.

Moreover, the Morris County Clean Communities "Keep Morris County Litter Free" program offers the opportunity for students (grades 5 through 12) from public schools to conduct litter cleanups and to earn grant money to improve the recycling programs in their schools.

In addition, the poster contest provides budding artists the opportunity to design posters that will encourage everyone to care and respect our planet Earth and prevent litter!



Student volunteers removed 700 pounds of litter and trash from the woods around their school.

Help Illegal Dumping

Morris County's solid waste enforcement office is dedicated to investigating and resolving citizen reports of illegal dumping. While not every complaint can be resolved quickly, be assured Morris County is committed to investigating illegal dumping promptly and taking appropriate action.

Illegal dumping and other harmful unauthorized activity will result in

swift and severe enforcement penalties. Report the illegal dumping or suspicious behavior to the Police Department, but do not approach illegal dumpers. You may remain anonymous.

Take note of:

- Date and time of the incident
- The vehicle license plate
- A description of the vehicle
- The location of the dumping incident.

New Jersey DEP

(Department of Environmental Protection)

Action Hotline:

1-877-WARN-DEP

1-877-927-6337

24 hours a day, 7 days a week




Recycling "NO-NO's"

Do Not Put These Items Into The Curbside Recycling Bin



Do not recycle

- No loose shredded paper (must be in a clear plastic bag)
- No hardcover books
- No waxed paper or waxed cardboard
- No scrap metal
- No metal appliances, pots, pans
- No electronic waste, batteries, cell phones, computers, toys
- No plant material or food waste
- No clay pots, window panes, mirrors, glass vases, ceramics, light bulbs, Pyrex™
- No rubber, nylon, or vinyl
- No clothing or textiles
- No hoses

- No plastic bags (except for clear plastic bags containing shredded paper)
- No small pill bottles
- No VHS/VCR tapes, CDs/DVDS
- No plant trays or flower pots
- No straws, spray pumps, nozzles
- No Styrofoam™ or paper to go containers
- No motor oil, gas, antifreeze containers
- No PVC
- No plastics coded: 
- No liquids
- No garbage
- No hangers

DON'T BAG

Recyclables



NO PLASTIC BAGS IN RECYCLING

Thank you for recycling right!



Remove plastic packing material from cardboard boxes before recycling the boxes



Hangers do not belong in the curbside recycling bin. Check with local charity organizations, scrap metal dealers, dry cleaners or neighbors to see if they can be reused.

* Recycle clean, dry plastic bags and film packaging



how2recycle.info

Look for this label on film products like these:



Air Pillows



Grocery & Retail Bags labeled #2 (HDPE) or #4 (LLDPE)
Tip: Store in plastic bag until next trip to the store



Case Wrap



Newspaper Bags



Bread Bags
(with crumbs shaken out)



Produce Bags



Food Storage Bags



Napkin, Paper Towel, Bathroom Tissue and Diaper Wrap Packaging

plasticfilmrecycling.org

* Plastic bags, plastic film, and plastic wraps are not accepted in the curbside recycling container. Many supermarkets have drop-off recycling bins for these items. To find a location where they can be recycled, visit: plasticfilmrecycling.org

ReUse Organizations

Morris Habitat for Humanity Restore:

973-366-3358, www.morrisrestore.org
Randolph, NJ. Accepts new and gently used furniture, building materials, appliances. Pick up may be available.

Green Demolitions:

862-210-8332, www.greendemolitions.com
Fairfield, NJ. Accepts new and lightly used appliances, bathrooms, fixtures, kitchens and furniture. Sends crew to remove.

Community Food Bank of New Jersey:

908-355-3663, www.cfnj.org
Hillside, NJ. Accepts canned fish, boxed meals, canned packaged meals, peanut butter, canned veggies/fruit.

Free Cycle:

www.freecycle.org
Online organization with free membership. Giving and getting stuff for free.

Interfaith Food Pantry:

973-538-8049, www.mcfp.org
Morris Plains, NJ. For list of needed items, go to the home page.

Market Street Mission:

973-538-0427, www.marketstreet.org
Morristown, NJ. The thrift store accepts most items. Unacceptable: toys, magazines, tires, batteries and weapons.

Salvation Army Family Thrift Stores:

800-728-7825, SATRUCK.org
Accepts clothing, household items, books, electronics and more. Provides pick up service.

Goodwill Industries International, Inc.:

718-777-6320, www.goodwillnynj.org
Pequannock and Rockaway Borough, NJ. Stores accept new and gently used clothing, household items, shoes, jewelry, luggage, books and more.

Goodwill Home Medical:

609-812-2210, www.goodwillhomemedical.org
Southern New Jersey. Donate and buy used medical equipment.

Lupus Foundation of America, Inc.:

888-445-8787, www.lupuspickup.org
The website contains a list of acceptable items. Schedule a pick up.

Big Brothers, Big Sisters of Northern NJ:

877-336-8828, www.donatebbbs.com
Mountain Lakes, NJ. Accepts clothing and household items. Schedule a pick up.

The Gruenert Center: (Catholic Charities)

973-409-2751 ext. 2
www.dpd.org/gruenert-center
Lake Hopatcong, NJ. Accepts adult-sized costumes, greeting cards, card stock, glue sticks and other craft supplies.

Pedals for Progress:

908-638-4811, www.p4p.org
Accepts bicycles that are in repairable condition and portable sewing machines in good working condition (\$10 donation for shipping per bike and sewing machine).

New Legacy Books:

908-651-5298, www.newlegacybooks.com
Hackettstown, NJ store and area drop boxes. Accepts hard cover and paperback books in good condition with an ISBN number on the cover.

ReUse Marketplace:

www.reusemarketplace.org
Free online reuse service to find, sell, trade or give away reusable and surplus items.



DON'T TRASH YOUR UNWANTED STUFF. DONATE OR SELL IT.

Reuse... It's good for the community and good for the environment. Explore reuse opportunities at recycle.nj.gov

One person's trash can be another person's treasure. So before you toss it, see if someone else wants it. Remember the second "R" in "Reduce, Reuse and Recycle!"



Pedals for Progress



Pedals for Progress is a non-profit organization that supplies development aid by collecting used bicycles in the U.S. and ships them to developing countries for use by the working poor. The used bicycles become a valuable opportunity for transportation and employment. The bikes are adapted for use as trash haulers, produce trucks, taxis, and for access to medical care. Over 150,000 bikes have been shipped by this organization!

Pedals for Progress, through the Sewing Peace program, has collected and sent over 4,000 sewing machines to developing countries and changed so many lives for the better. The donated sewing machines are included in with the bike shipments.

The sewing machines provide business opportunities. Students can learn to sew; many of these machines will outfit programs in schools, teaching people a valuable skill they can use to support their families!

To donate a bike or a sewing machine, or for more information: www.P4P.org or 908-638-4811.



Conserve Water—There Is No Time To Waste

The U.S. population has doubled over the past 50 years, while our thirst for water has tripled. Individuals can reduce their use of water and minimize their contribution to drought conditions by following these water conservation practices:

General

- Check and repair leaky faucets. Turn off faucets securely. A dripping faucet can waste 20 gallons a day.
- Letting water run from a faucet until it gets hot is a waste. Capture the water for other uses like watering plants, filling buckets for cleaning, etc.
- Serve water at restaurants by request only.

Bathroom

- Check toilet for leaks. Add a few drops of dye or food coloring to the water tank and see if it appears in the bowl, this indicates a leak in the flap valve.
- Install a low flow toilet or add a water saving device to the water tank of conventional toilets. Install a plastic bottle weighted with pebbles to displace water in the tank. Do not use bricks or alter low flow toilets.
- Flush only when necessary. Do not use the toilet as a wastebasket or ashtray. Each flush uses 2 to 7 gallons of water.
- Install a low flow showerhead. Keep

showers under 5 minutes.

- Partially fill the bathtub for bathing, a full tub uses 50 gallons of water. Try bathing with 10 gallons.
- Do not run water. Turn off water after you wet your toothbrush or razor.

Kitchen

- Install an aerator on the kitchen faucet.
- Prepare food efficiently. Wash fruits and vegetables in a bowl. Rinse with short bursts from the sprayer.
- Do not defrost food under running water, plan ahead by defrosting overnight in the refrigerator or use a microwave.
- Run dishwashers only when full and scrape or wipe dishes clean to reduce pre-rinse.
- Hand wash dishes in a basin filled with water, rinse with a sprayer. Do not run water continuously.
- Avoid using garbage disposals, compost suitable waste and feed leftovers to pets.
- Cool drinking water in a refrigerator or with ice, not by running the tap.

Laundry

- Match washing machine load selector to laundry load size and only do full loads.
- When replacing a washing machine, choose water/energy efficient models.

Outdoors (when permitted)

- Plant less lawn and mow less frequently. Do not cut it short. Landscape with drought resistant trees and shrubs, use mulch to reduce evaporation.
- Water lawns only when needed. If grass springs back under foot pressure, no water needed, if it stays flat it needs water.
- When watering the lawn, water long enough for moisture to soak down to the roots to promote deep root growth and make it more drought resistant.
- Water lawns only in the cooler early morning and evening.
- Direct lawn sprinklers on the lawn, not on the street, driveway or sidewalk.
- Sweep or blow driveways clean. Do not use a hose.
- Have your car washed at a car wash that recycles its water. If you wash your car, use a pail of soapy water and a quick rinse from the hose.
- Equip hoses with trigger type nozzles.
- Cover pools and spas to reduce evaporation, avoid wasting water from overflows/splashes by reducing water levels.

Safe Syringe Disposal Drop Off Locations

St. Clare's Hospital (Dover and Denville Campuses) - Drop off syringes at the front desk, in a sealed, hardened container. Dover 973-989-3073. Denville 973-625-6026.

Morristown Medical Center - Containers for syringes can be picked up or dropped off at the outpatient desk. Hours are M-F, 7:00am-7:00pm and Saturdays 7:00am-3:00pm. Syringes must be empty and syringe containers cannot be more than $\frac{3}{4}$ full, 973-971-4177.

Chilton Memorial Hospital/Access Center (Pompton Plains) - Pick up empty syringe containers and drop off full ones at the Access Center. Hours: M-F, 6:00am-8:00pm and Saturdays 7:00am-3:00pm, 973-831-5191.

An option for safe syringe disposal by mail may be obtained by contacting: Waste Management, a waste hauling company, has a "Sharps Disposal by Mail" program. Call Waste Management for prices and details at 877-WASTE-MD.

Note: Contact any program prior to use for specifics. For more information on proper sharps disposal, contact your local Health Official: www.morriscountynj.gov, visit the U.S. Federal Drug Administration site: www.fda.gov and search for Needles and Other Sharps (Safe Disposal Outside of Health Care Settings), or visit: www.safeneedledisposal.info

Prescription Drug Drop Box Program

Dispose of prescription drugs safely! Bring your unused or expired prescription drugs to participating police departments. Visit the Morris County Sheriff's Office website for a list of drop off sites: <https://sheriff.morriscountynj.gov/community/drug/>



Mandated Recyclable Materials

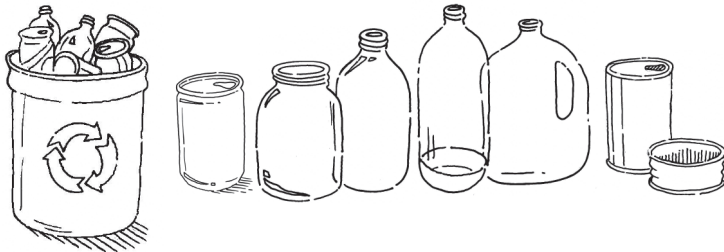
Morris County, New Jersey



The law requires all waste generators in Morris County to keep the materials that are listed below separate from garbage to be recycled (“source separation”). These materials must remain separated from garbage until they reach an appropriate recycling facility. Everyone is a waste generator and must keep the recyclable materials listed below separate from garbage whether at home, at work or at play. If a location does not have separate receptacles for these mandated recyclable materials, speak to the management and tell them recycling is the law. Waste generators include, but are not limited to, residents, (single-family homes, multifamily complexes, hotels), office buildings, businesses, schools, restaurants, shopping centers, medical facilities, government buildings, recreational areas, and construction sites.

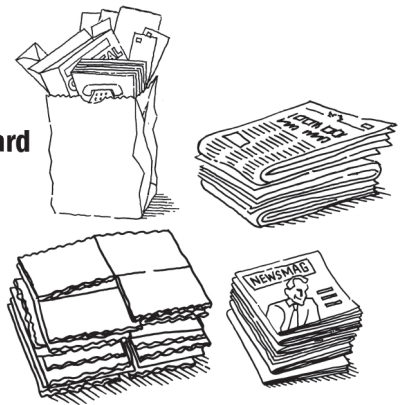
Bottles and Cans

- Aluminum Cans
- Glass Bottles and Jars
- Plastic Bottles (coded 1 and 2)
- Steel (Tin) Cans



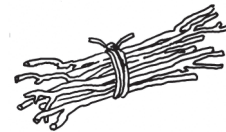
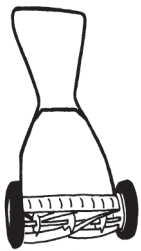
Paper

- Newspaper
- Corrugated Cardboard
- Mixed Paper



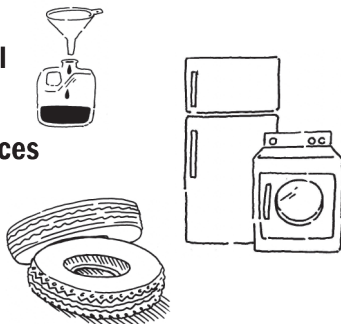
Mandated Organics

- Leaves
- Grass Clippings
- Brush
- Natural Wood Waste - Logs, Stumps, Branches and Other Wood Tree Parts



Additional Mandated Recyclables

- Used Motor Oil
- Metal Appliances
- Whole Tires



- Hazardous Dry Cell Batteries
- Lead-Acid Batteries
- Oil-Contaminated Soil
- Televisions, Computers, Tablets, Laptops, Monitors, Desktop Printers, Desktop Faxes

